

MHS

WELCOME CLASS OF

2026

Administration/School Counselors

Ms. Callan, Principal

Mr. McLaughlin, Grades 9 & 11 Assistant Principal

Mr. Hallett, Grades 10 & 12 Assistant Principal

Ms. Corcoran: A-F School Counselor

Mr. Derosby: G-O School Counselor

Mrs. Frame: P-Z School Counselor

Welcome

Topics to be covered in this presentation:

- Daily Schedule
- Available Student Supports
- Course Selections

Daily Schedule

Schedule- 5 period day, 60 minutes in length, quarter and semester based courses, red/white schedule

Period 1: 8:00-9:00

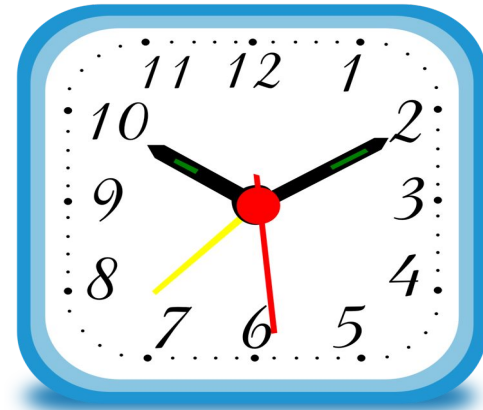
Period 2: 9:05-10:05

Period 3: 10:10-11:10

Period 4 /Lunch: 11:15-12:50

Period 5: 12:55-1:55

GST: 2:00-2:30



What classes will my student take next year?

- All freshmen must take 2 English classes, 2 math classes, 1 science class, 1 social studies class, JMG 9/10
- The remainder of their schedule will be balanced out with physical education, music (band/chorus), art, tech trades, world languages, etc.
- Students need **30** credits to graduate and **40** hours of Community Service



English Courses

Struggle a bit with ELA, or it's not your favorite thing, take: Writing 1: Writing for High School & Non-Fiction I

Are comfortable in ELA: Writing I: Writing for High School & Elements of Fiction A (the majority of students should take this combo)

Are strong in ELA and enjoy reading and writing, take: Elements of Fiction A & Elements of Fiction B

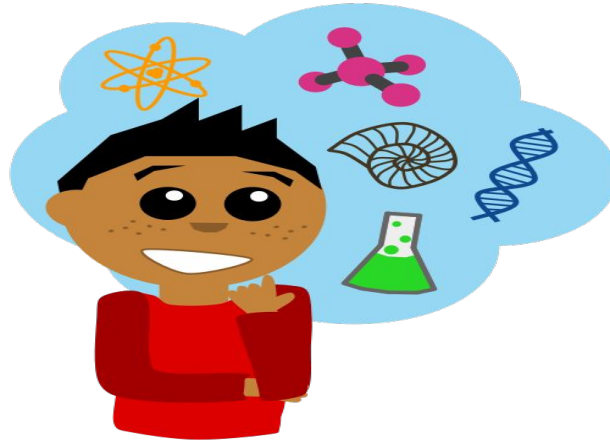


Social Studies Courses: Modern U.S. History, Modern World History



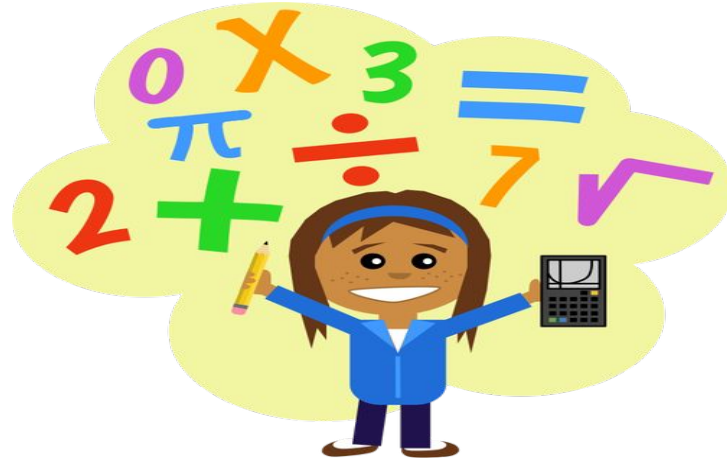
Science Courses:

- Biology w/lab
- Physical Science (if you need additional support in science and math)
- Chemistry A (second semester, after completing Biology w/lab)
- Forensic Science (second semester, after completing Biology w/lab)



Math Courses:

Mrs. Michaud-Alexis, content lead at the high school, has shared the math placement chart with the staff at the middle school. There are many pathways that a student may take and it is imperative that we place them in the correct math level for success. If you have any questions about which math course your son/daughter should take please reach out to your student's teacher.



Available Student Supports

- School Counselor
- Advisor
- IEP Case Managers
- Access to school based-counseling
- Nurse
- 2 Assistant Principals
- Principal
- School Resource Officer
- Class Advisors



Academic Support- we offer guided study time at the end of each day which means that teachers can tag those students who may need academic support

QUESTIONS? QUESTIONS? QUESTIONS?